

# Here's How:

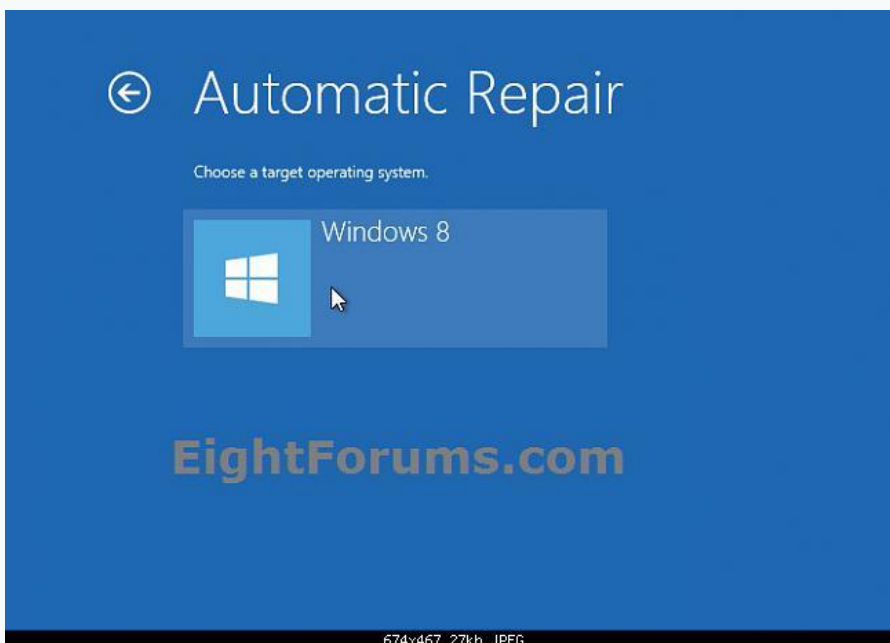
1. Boot to the **System Recovery Options** screen, and click/tap on **Advanced options** and **Automatic Repair**. (see screenshot below)

**NOTE:** *Your PC may restart after this.*



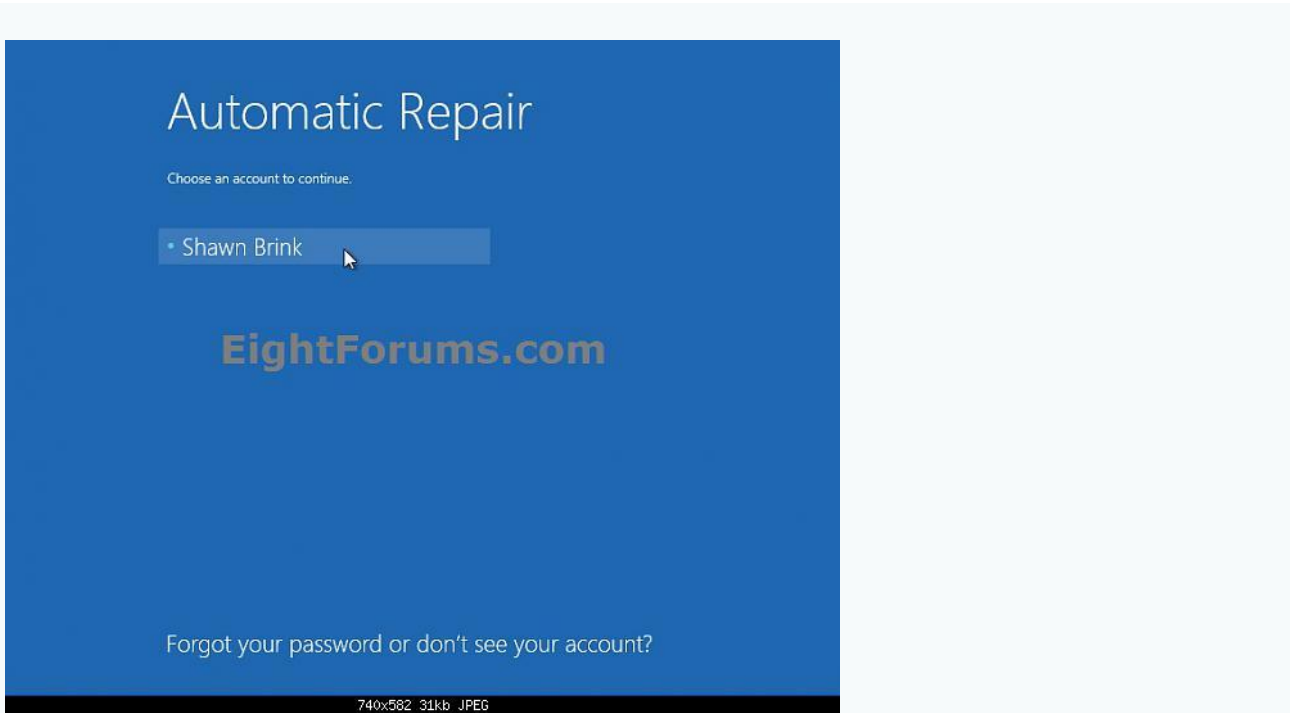
2. If prompted, choose the **OS** (ex: Windows 8) that you want to do an Automatic Repair on. (see screenshot below)

**NOTE:** *You will usually only see this if you booted from a Windows 8 installation DVD or USB thumb drive, or ISO file if in a virtual machine.*



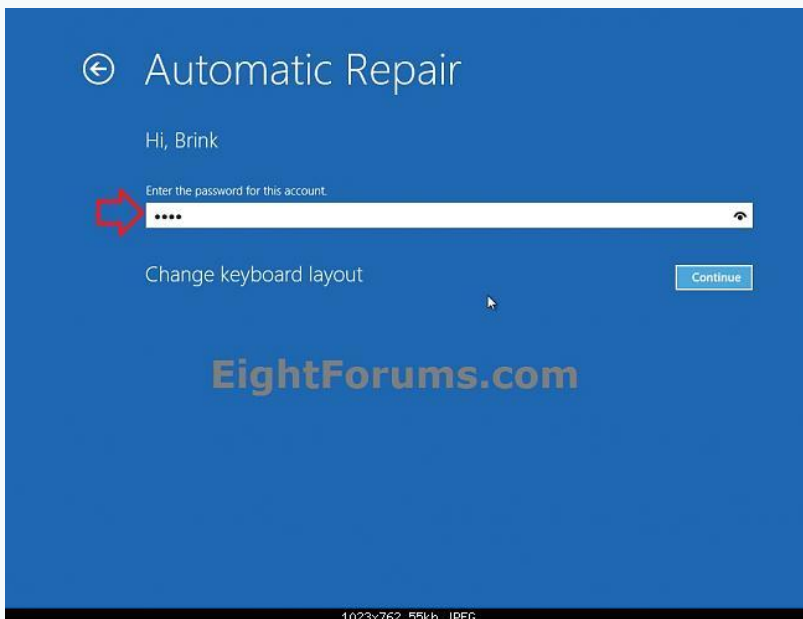
3. If prompted, select an **administrator** account. (see screenshot below)

**NOTE:** *Standard user accounts and domain accounts on the computer will not be listed.*



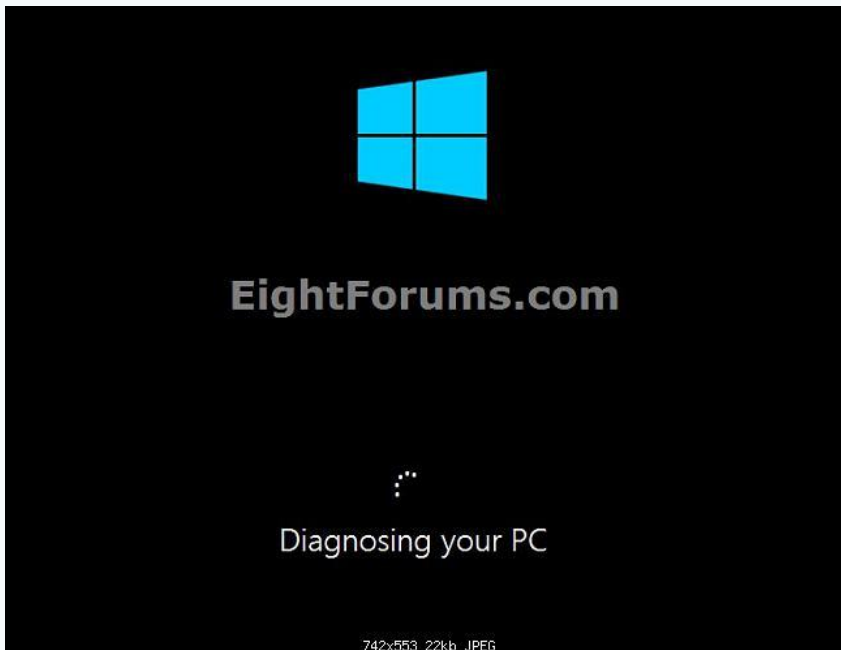
A) Type in the **password** for the selected administrator account, and click/tap on **Continue**. (see screenshot below)

**NOTE:** If you need to **change the keyboard layout** (language), then do so before entering your password so it will be the same language that the password was set in and match.



4. Automatic Repair will now start "Diagnosing your PC", and attempt to automatically repair them. (see screenshot below)

**NOTE:** *Automatic Repair might prompt you to make choices as it tries to fix the problem, and if necessary, it might restart your computer as it makes repairs.*



5. If startup repair could not find problems or repair your computer, then either click/tap on **Shut down** to turn off your PC, or click/tap on **Advanced options** to go back to step 1.

**NOTE:** *Sometimes it may take to **run Automatic Repair 3 times** to fix the startup issue.*



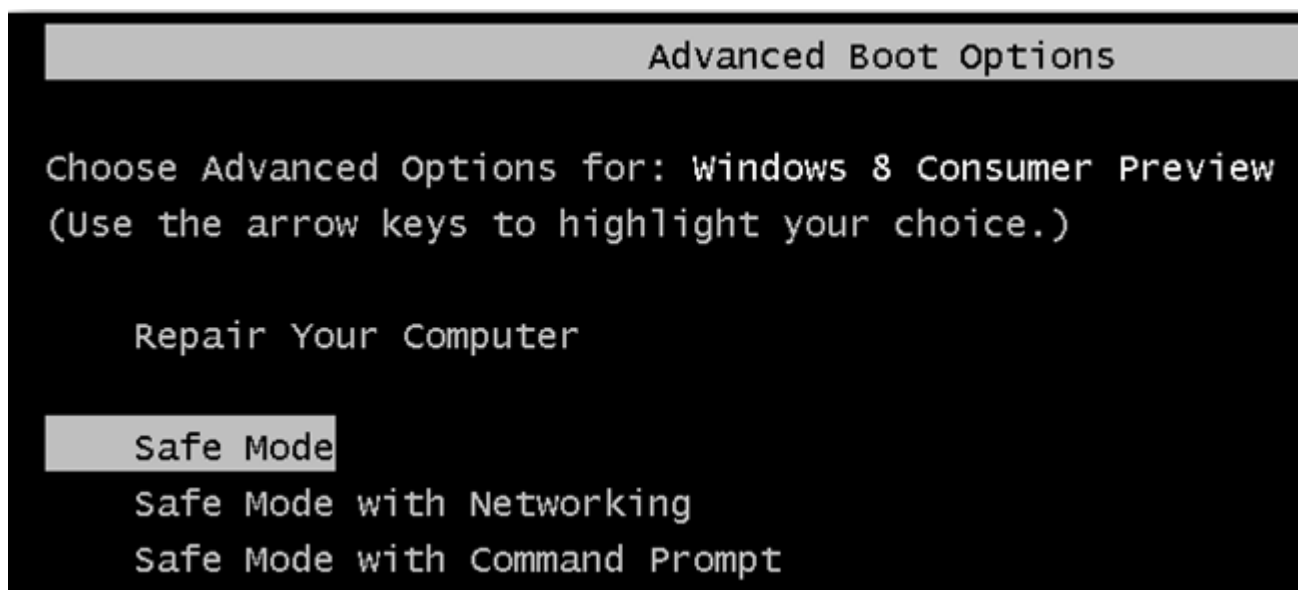
That's it,  
Shawn

Repair Master Boot Record in Windows 8 | 7

<http://www.thewindowsclub.com/repair-master-boot-record-mbr-windows>

---

## How To Boot Into Safe Mode On Windows 8 (The Easy Way)



One of the most common steps when troubleshooting a PC is to boot into safe mode. For a long time this has been achieved by pressing the F8 key, this all changes with Windows 8 and its Automatic Repair mode. But what if we want Safe Mode?

You can still have Safe Mode, however, it is buried deep into the recovery options of Windows 8. While just mashing the F8 key as we all know will boot you into automatic recovery mode, you can still manually access the recovery options by pressing the Shift+F8 key combination.

### Booting Into Safe Mode on Windows 8

The trick is to hold the Shift button and mash the F8 key, this will *sometimes* boot you into the new advanced "recovery mode", where you can choose to see advanced repair options.

# Recovery

## It looks like Windows didn't load correctly

If you'd like to restart and try again, choose "Restart my PC" below. Otherwise, choose "See advanced repair options" for troubleshooting tools and advanced options. If you don't know which option is right for you, contact someone you trust to help with this.

See advanced repair options

Restart my PC

You will need to click on the Troubleshoot option.

# Choose an option



## Continue

Exit and continue to Windows 8  
Consumer Preview



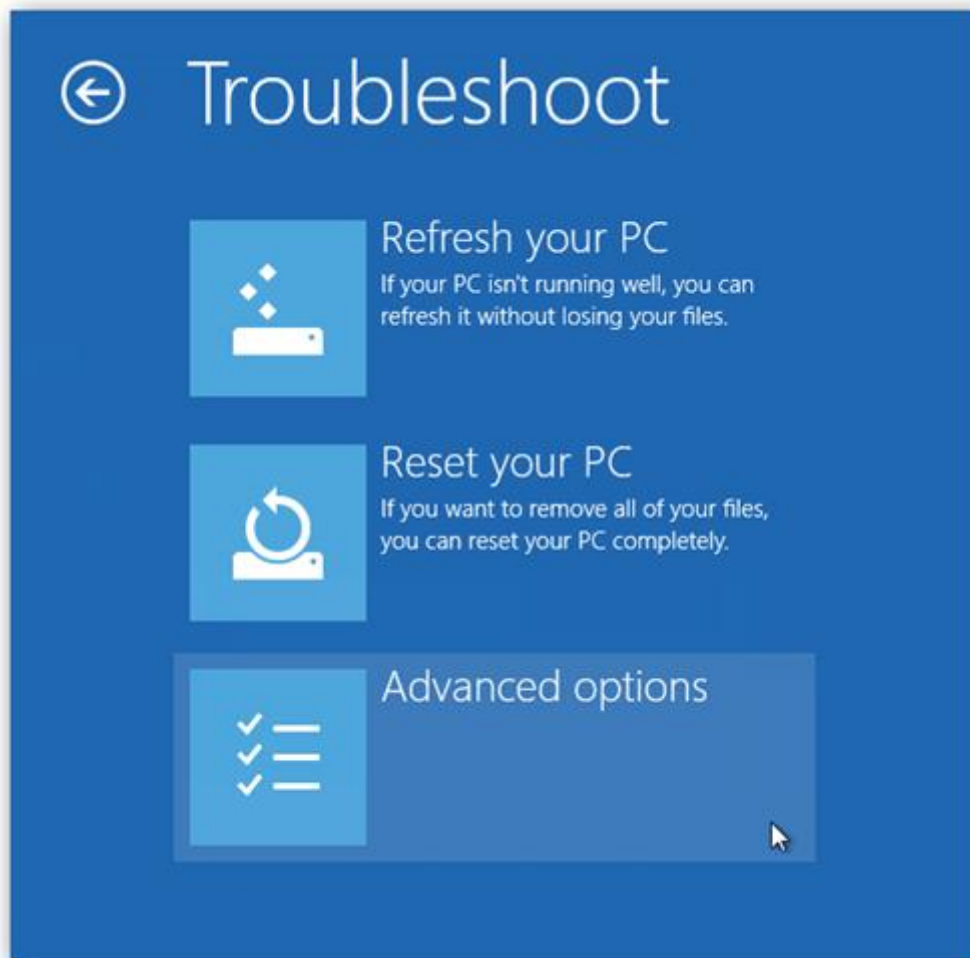
## Troubleshoot

Refresh or reset your PC, or use  
advanced tools

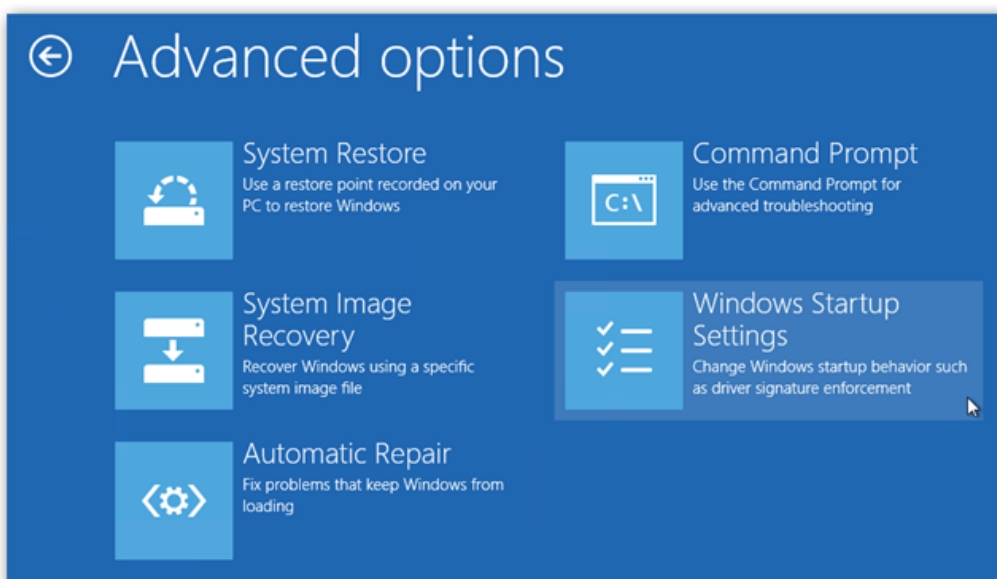


## Turn off your PC

Now select Advanced Options.



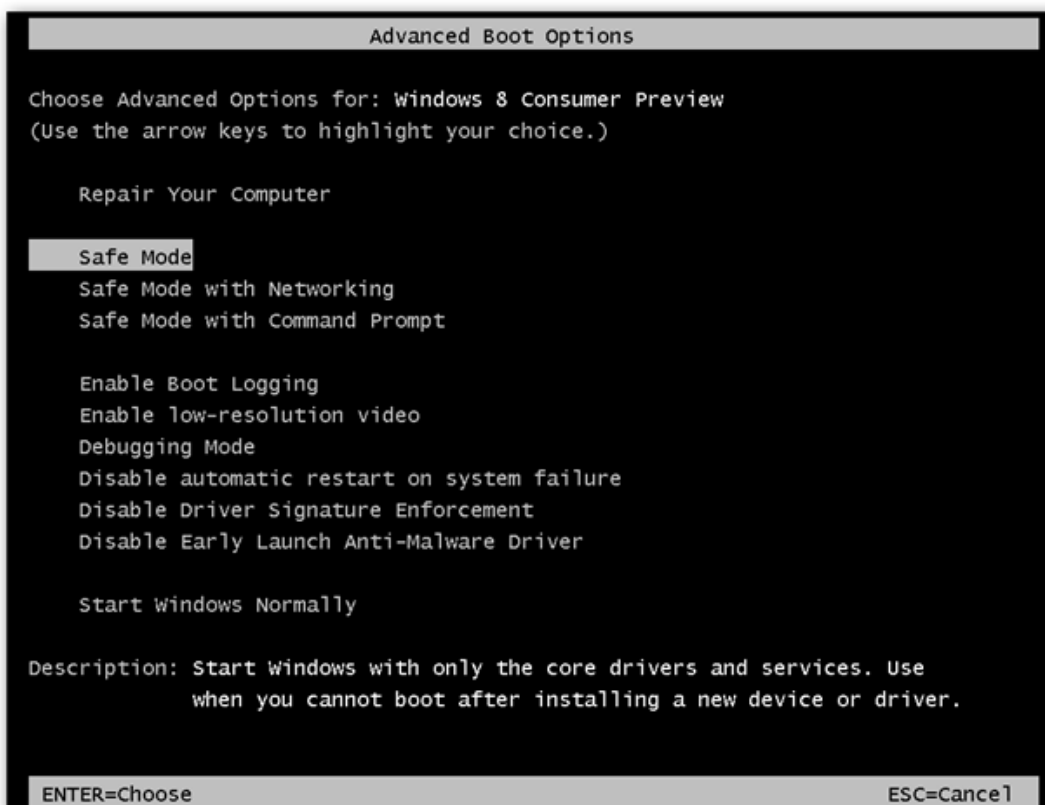
Now choose the Windows Startup Settings option, by the looks of things we were never meant to find Safe Mode.



Finally hit the Restart button.

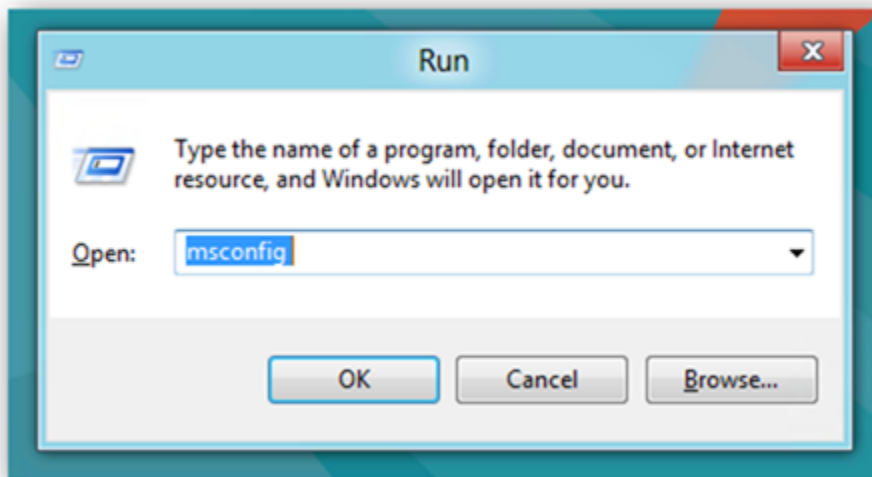


Like magic, when your PC reboots you will be able to boot into Safe Mode from the familiar looking Advanced Boot Options screen.

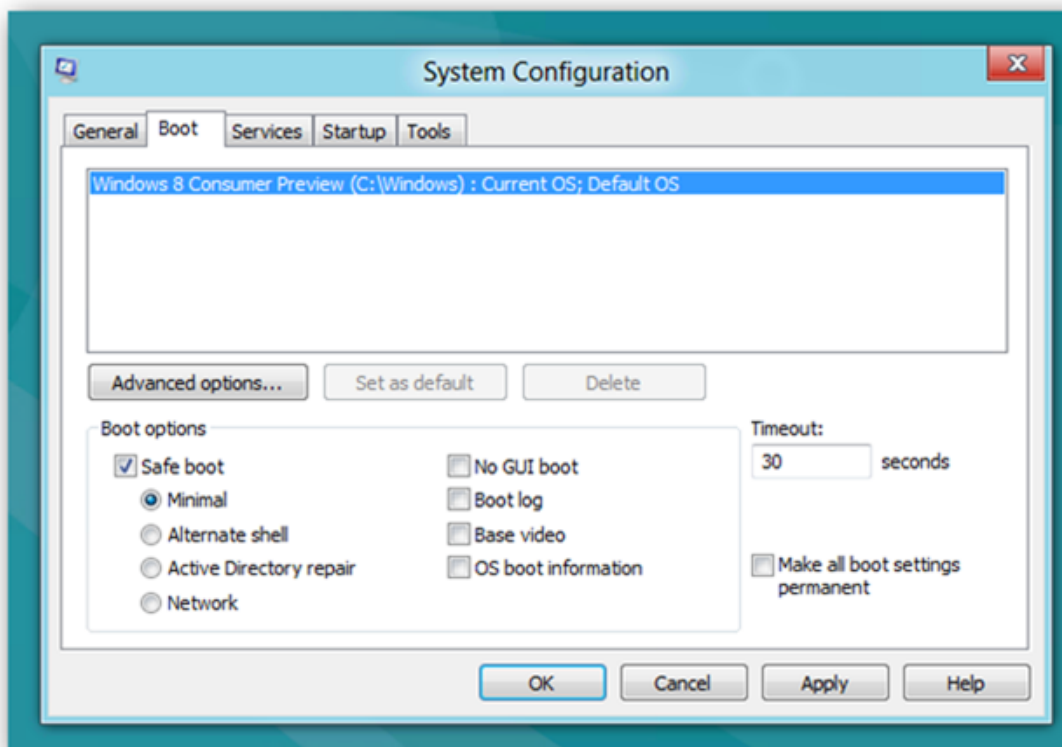


## Getting To Safe Mode From Within Windows 8

You have a second option, however, this requires you to be booted into Windows already. Press the Win+R key combination and type msconfig in the run box and hit enter.



Switch over to the boot tab, and click on the Safe Boot check box.

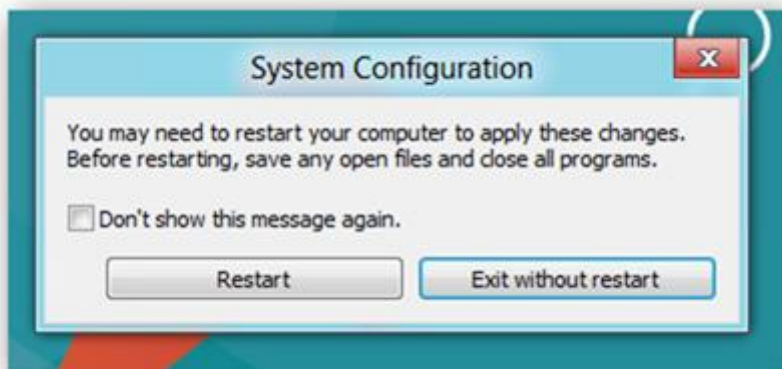




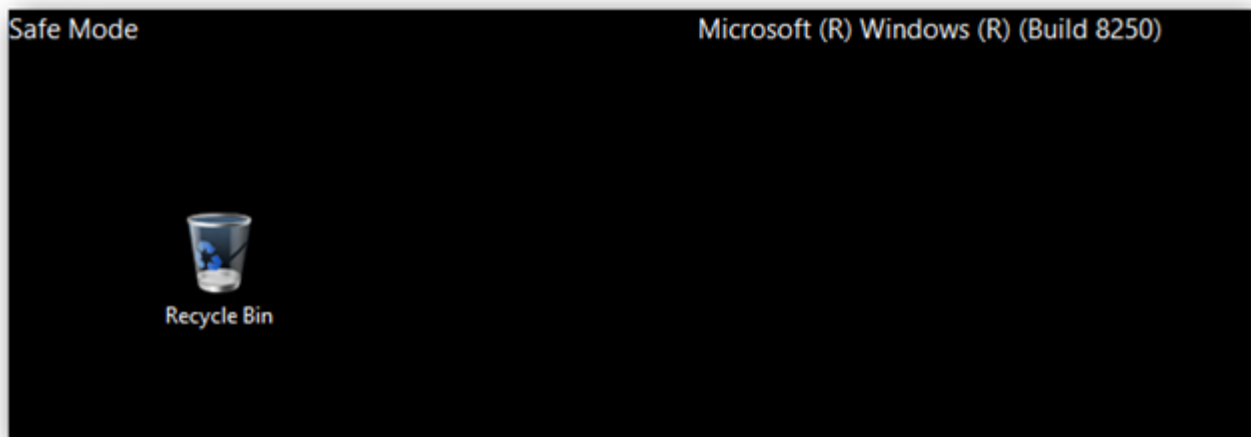
You can also choose the type of Safe Mode you want to boot into:

- **Minimal** is normal safe mode.
- **Alternate Shell** is safe mode with command prompt
- **Network** is safe mode with networking.

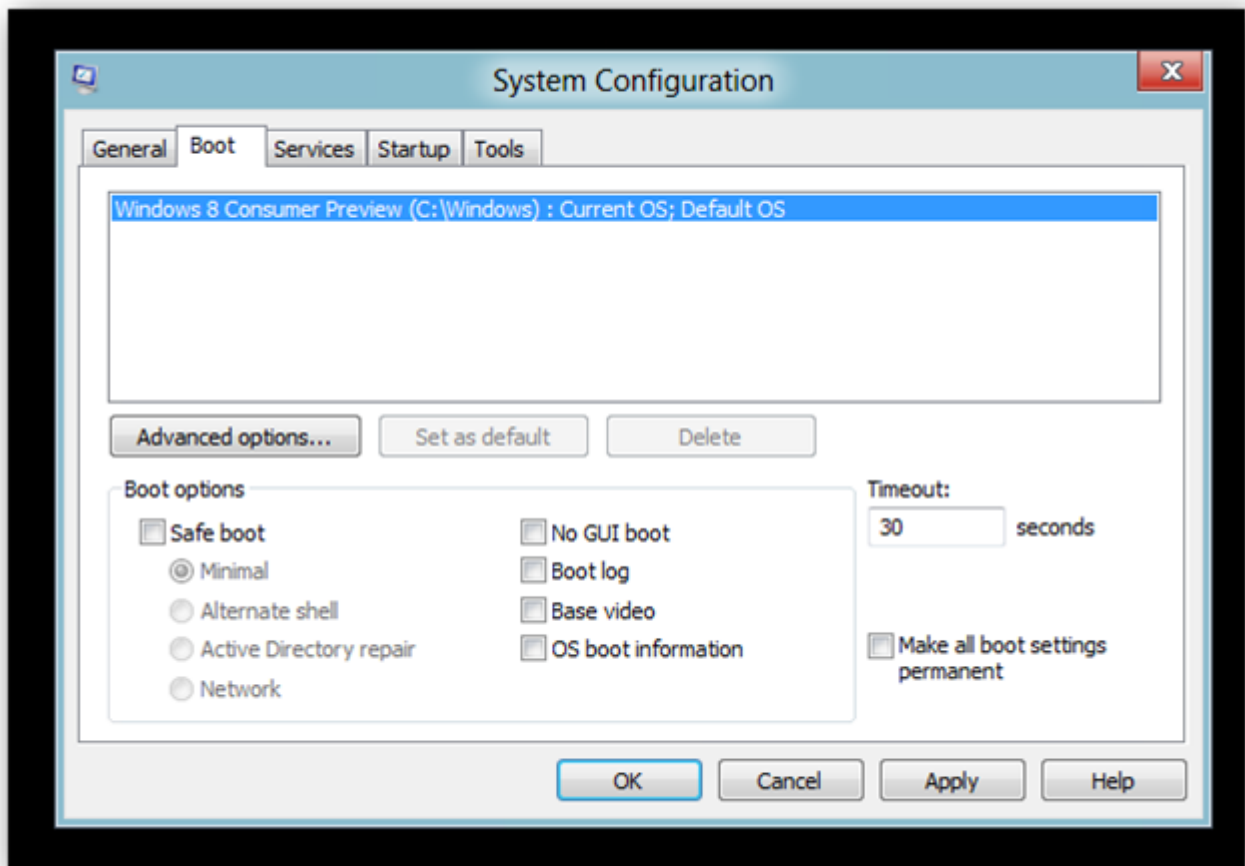
The Active Directory option pertains to restoring a server that is a Domain Controller for your network. Once you have chosen your option click the ok button and restart your machine.



Your PC will be booted into Safe Mode automatically.



If you restart your PC you will just keep getting booted into Safe Mode, to stop this open msconfig again and uncheck the Safe Boot option, then hit the ok button.



Finally Restart your Machine.



That's all there is to it.